



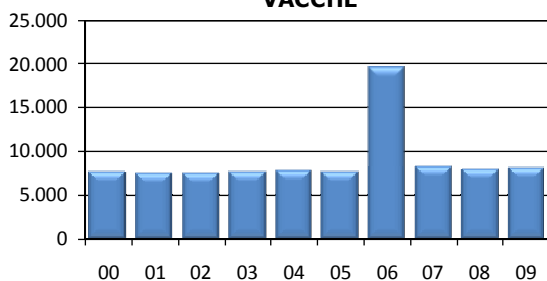
Medie Produzioni Latte/Grasso/Proteine Vacche Razza Frisona Controllate

2009

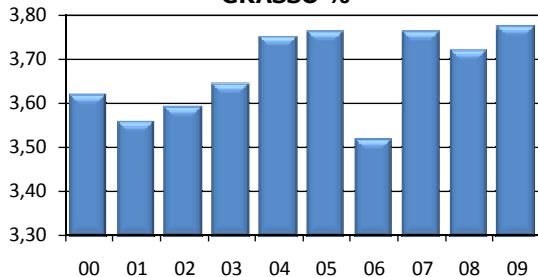
CALABRIA

ANNO	CONSISTENZA		TREND FENOTIPICO			VACCHE x ALLEVAMENTO
	ALLEVAMENTI	VACCHE	LATTE KG	GRASSO %	PROTEINE %	
2000	191	7.553	7.018	3,62	3,26	40
2001	176	7.425	7.316	3,56	3,26	42
2002	161	7.473	7.272	3,59	3,32	46
2003	154	7.619	7.315	3,64	3,28	49
2004	151	7.774	7.208	3,75	3,29	51
2005	144	7.656	7.354	3,76	3,29	53
2006	643	19.417	7.533	3,52	3,24	30
2007	152	8.216	7.403	3,76	3,32	54
2008	151	7.888	7.458	3,72	3,36	52
2009	146	8.072	7.813	3,77	3,40	55

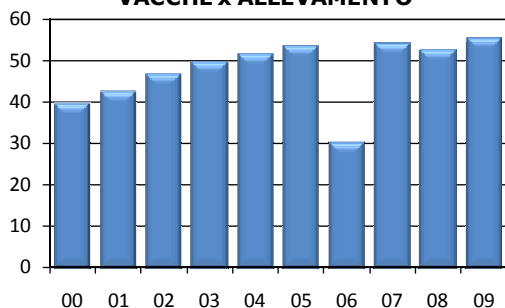
VACCHE



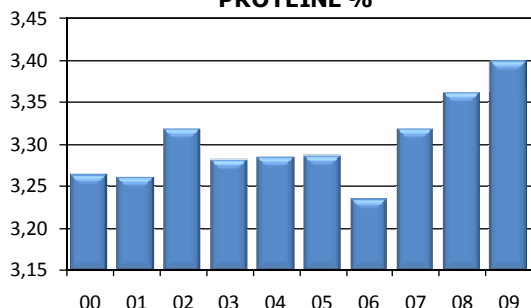
GRASSO %



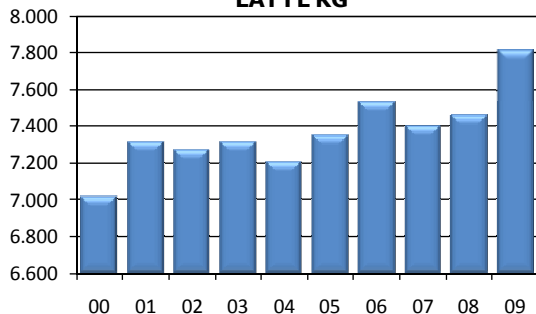
VACCHE x ALLEVAMENTO



PROTEINE %



LATTE KG



**I DATI DEI CONTROLLI
(PESO SU PESO)
DIFFERISCONO DAI DATI DI CONSEGNA
(PESO SU VOLUME) DI 0,3%.
PER IL 2009 LE RELATIVE PERCENTUALI
SONO:**

**GRASSO %
3,89**

**PROTEINE %
3,50**