

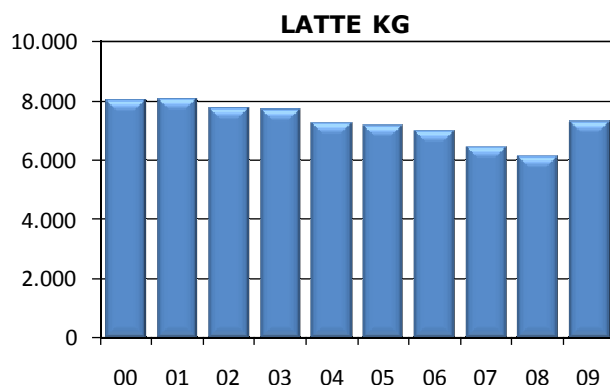
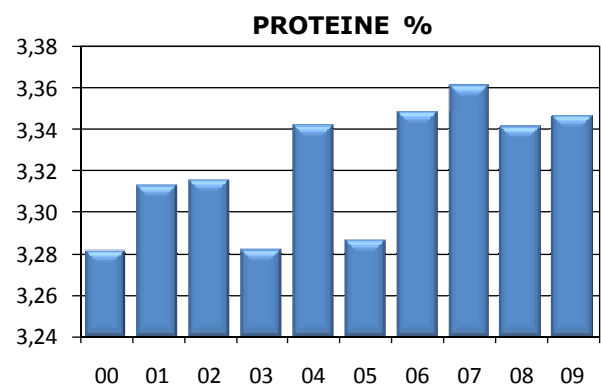
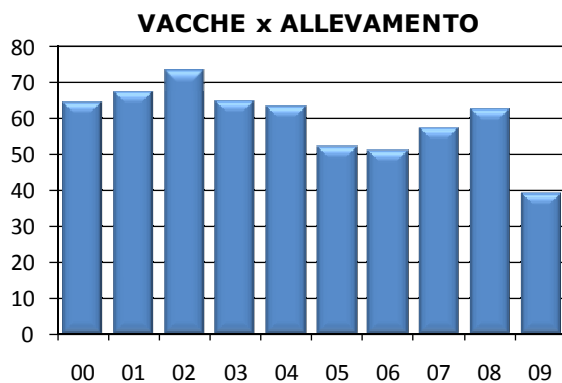
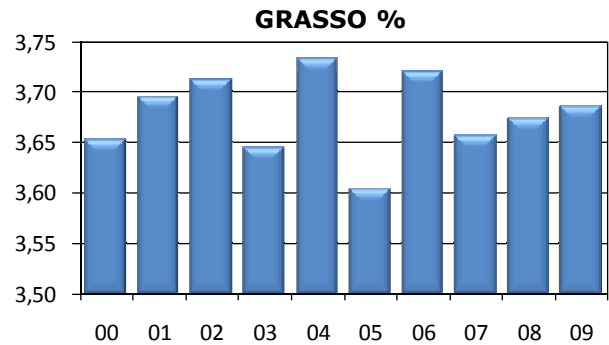
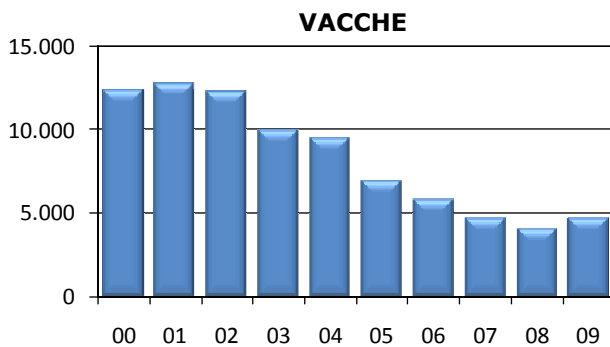


Medie Produzioni Latte/Grasso/Proteine Vacche Razza Frisona Controllate

2009

CAMPANIA

ANNO	CONSISTENZA		TREND FENOTIPICO			VACCHE x ALLEVAMENTO
	ALLEVAMENTI	VACCHE	LATTE KG	GRASSO %	PROTEINE %	
2000	192	12.350	8.024	3,65	3,28	64
2001	190	12.766	8.067	3,69	3,31	67
2002	167	12.220	7.732	3,71	3,32	73
2003	154	9.968	7.721	3,65	3,28	65
2004	149	9.433	7.234	3,73	3,34	63
2005	133	6.928	7.184	3,60	3,29	52
2006	114	5.792	6.964	3,72	3,35	51
2007	82	4.702	6.446	3,66	3,36	57
2008	65	4.071	6.115	3,67	3,34	63
2009	120	4.704	7.313	3,69	3,35	39



**I DATI DEI CONTROLLI
(PESO SU PESO)
DIFFERISCONO DAI DATI DI CONSEGNA
(PESO SU VOLUME) DI 0,3%.
PER IL 2009 LE RELATIVE PERCENTUALI
SONO:**

**GRASSO %
3,80**

**PROTEINE %
3,45**